

# LEIGH ACADEMY CHERRY ORCHARD

## CORE SAFEGUARDING TEAM

**Mrs Julie Forsythe**  
(Principal)  
Designated Safeguarding  
Lead



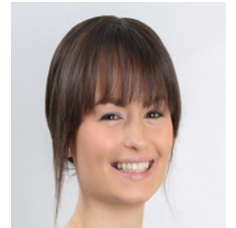
**Mrs Zoe Bushell**  
(Vice Principal & IT Lead)  
Deputy Safeguarding Lead



**Mrs Sheena Williams**  
(FLO & Extended Schools)  
Deputy Safeguarding Lead



**Mrs Emma Newton**  
(Vice Principal)  
Deputy Safeguarding Lead



**Mrs Rachel Barber**  
(Pre-school Manager)  
Deputy Safeguarding Lead



**Mrs Rebecca Payne**  
(Teacher, Personal Dev Lead  
& KS1 Phase Lead)  
Deputy Safeguarding Lead



## ADDITIONAL DEPUTY SAFEGUARDING LEAD

**Mrs Vicki Adams**  
(SENCo)  
Deputy Safeguarding Lead



*If you have a concern about a child, please report this to the Safeguarding lead as a matter of urgency. If a child is in immediate danger, and you cannot get in contact with DSL, you must call the Central Referral Unit on: 03000 41 11 11*

*Urgent child protection issue outside of office hours: Call the Central Duty Out of Hours Number: 03000 41 91 91*

*If you have a concern about a member of staff you need to speak to the LADO Team. You can contact the LADO Team by phone or email, contact number: 03000 410 888 Email: [kentchildrenslado@kent.gov.uk](mailto:kentchildrenslado@kent.gov.uk)*

*Please remember the 5 R's! Recognise, Respond, Report, Record, Refer*



Leigh Academy

# Cherry Orchard